



driving test - possible questions

Wheels:	for example: 195/55 R 15 84 T E2 Tubeless M+S TWI	
195	195mm (millimeters) width	
55	55% from the width is the height in mm (millimeters)	
R	radial tire (no "R" would be a diagonal tire)	
15	15" (inch) rim diameter	
84	load capacity index	
T	speed capacity index	
E2	European test mark	
Tubeless	no tube inside	
M+S	mud and snow (winter tire)	
TWI	depth indicator inside the profile grooves (Tread Wear Indicator)	

Profile depth summer: 1,6mm (indicator) winter: radial 4mm (diagonal 5mm)

Balancing weight: small weights which are fixed on the rims. When you lose one at a front wheel, you feel a "flutter" steering wheel (at about 60-80km/h)

Wheel (air) pressure: you can find it in the manual or a sticker in the tank cap or a sticker when you open the driver's door. Test it (once a month) with a tire pressure gauge at the petrol station.

Change wheels: car has to be fixed (parking brake and 1st gear) on a straight and hard ground
loosen screws
Fix jack like written in manual and lift the car (just) a little bit
change tire
tighten screws crosswise
lower car carefully
tighten screws once again
after a short drive fix screws again and check the pressure

Winter tire mandatory: 1st of November until 15th of April when snow or ice is on the road.

Warning devices

Headlight flasher: "high beam" pull indicator lever towards steering wheel a few times
Alarm flashing system: "hazard lights" (all 6 yellow indicators) accident, glitch, traffic jam warning on highway or whenever your car is a danger for others
Horn: push in the middle of the steering wheel - use at any danger

Signal devices

Indicator/turn signal (green), break lights (3x red), backup lights (white)

Steering

I can check: "self-reset" after a turn (hold steering wheel not too tight)
clearance turning steering wheel: standing car with open window (2-3cm)



Control devices



Charge indicator light

Battery uncharged. Electricity comes just from battery.
Belt is broken (check engine compartment) or generator is broken.
Driving might possible but observe the remote thermostat and check manual first!!!



Remote Thermostat

No engine cooling. Spin danger! Declutch, stop wherever possible and switch off engine. Not enough cooling liquid or the belt is cracked.



Oil pressure control

Engine without lubrication. Spin danger! Declutch, stop wherever possible and switch off engine. After 5 min control the oil. If necessary refill or tow the car away.



Brake control light

parking brake engaged or break fluid at minimum → make a break test while standing

Control in engine compartment

Engine cooling liquid open carefully when hot! Refill: water and additional cooling antifreeze in winter

Engine oil measure with oil dipstick, when engine is off at least 5 minutes. If necessary add a little bit of any matching oil, then measure again. Too much oil is dangerous!!!

Break liquid NEVER refill!!!! Eighter there is a hole or the brake pads are outworn when the brake liquid is not at maximum → make a break test while standing

Windshield wiper liquid Water, suitable cleaning supplies and don't forget antifreeze during winter

Belt(s) has to be tensed (max. 1cm movement) and no optical damage. When the belt is broken the generator can't produce electricity and in most cases the pump for cooling water doesn't work anymore (skid danger!!!)




Start-Battery Poles have to be clean and tight. (Remove battery cover first) When the battery is broken or empty you can't start the car. A jump start might help! Older battery's: You can refill distilled water but nowadays we hardly use them so you can't do anything.

Controls outside the car (walk around)

Number plate, lights, windows and mirrors have to be clean, present and undamaged. Control wheels and rims if damaged. Also the roof and the engine hood have to be clean of snow or leaves.



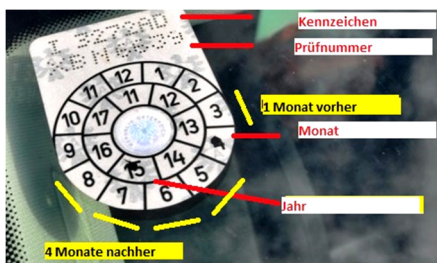
Lights

- Light level 1 front and back parking lights / License plate light (rear) / Dashboard light
- Light level 2 same like light level 1, additional low beam (40m)
-  Light level 3 high beam. Low beam has to be on. Push indicator away to turn on high beam.
-  Rear fog light bright rear red light. Use at bad view when no one is (close) behind you.
-  Fog lights 2 white front lamps below low beam. No obligation. You can always use them.

brake control

- Standing brake test:
 1. Brake liquid (engine compartment) let it be changed every 2 years/read manual
 2. Check all 3 red brake lights YOURSELF
 3. 1/3 empty way at brake pedal (when it's more, you lost maybe half or full brake power!)
 4. Resistance: 30sek stay hard on brake – may not move, has to stay hard
 5. **Tightness: 4-5x pump hard – Pedal may not move to ground**
 6. Brake booster: **4-5x pump hard, stay on pedal, start engine → Pedal has to move now**
 7. Parking brake: try to move away in 1st gear. Car is not supposed to move
- Rolling brake test: 10-15 km/h, keep loose steering wheel. Complete (hard) braking!
→ car may not pull to one side
- Driving brake test: 50 km/h. hold onto steering wheel! Full brake!
→ car has to stop in 10-12m (max. 2 seconds)

Inspection sticker ("Prüfpickerl") §57a



Outside circle: month / inner circle: year for the next check

For NEW cars: first check/inspection after 3 years, then after 2 years, then every year.

period of time: 1 month before and 4 months after the hole (outside circle) – so all together 6 month

Why? Important for road safety.

"Vignette" - toll for highways

Eighter as a sticker at the windshield or online/digital (enter number plate at www.asfinag.at and check there). You can buy it for 10 days, 2 months or 1 year. The 1-year-Vignette is valid for 14 months (from 1st of December - 1 whole year - until end of January)